

Membership benefits

- Full online subscription to the *Journal of Mathematical Biology*
- Travel awards for attending mathematical/theoretical biology conferences/workshops
- Reduced fees for selected conferences/workshops and schools
- Voting in society elections
- Free printed and online *European Communications*
- Free monthly online *ESMTB Infoletter*

Journal subscription at reduced rates (per year):

- Acta Biotheoretica: 75 EUR
- Computational and Mathematical Methods in Medicine: 50 EUR
- Dynamical Systems: 60 EUR
- Journal of Biological Dynamics: 50 EUR
- Journal of Biological Systems: 75 EUR
- *Journal of Mathematical Biology*: 25 EUR
- Mathematical Medicine and Biology: 115 EUR
- Theory in Biosciences: 80 EUR

Membership fees 2010

Individual annual membership fee

Full member	50 EUR
Shared full member ¹	40 EUR
Student, Eastern European, Developing Country member	25 EUR
Shared student member ¹	20 EUR

¹ For members of the following societies:
ISTMB | JSMB | NVTB | SFBT | SMB

Institutional² annual membership fee

200 EUR

² Includes up to 5 full memberships

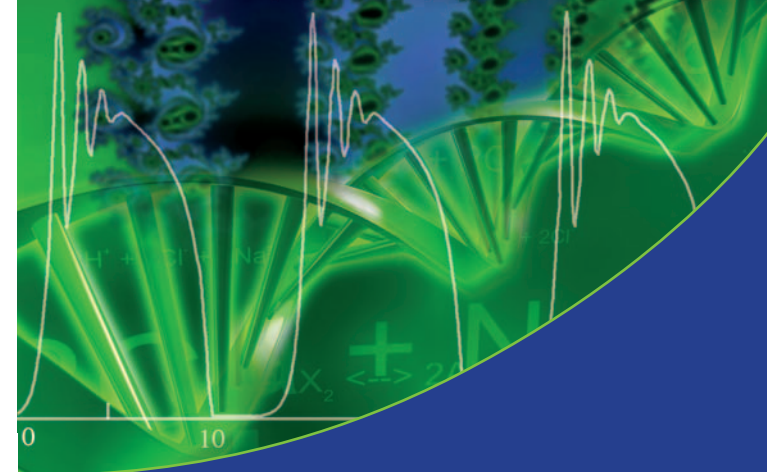
Contact

Prof. Dr. Andreas Deutsch

Center for Information Services &
High Performance Computing (ZIH)
Technische Universität Dresden
01062 Dresden, Germany
info@esmtb.org

www.esmtb.org

$$\begin{aligned} \frac{da}{dt} &= k_1 + k_2 a - \frac{k_3 ab}{a + k_4} - \frac{k_5 ac}{a + k_6} \\ \frac{db}{dt} &= k_7 a - \frac{k_8 b}{b + k_9} \\ \frac{dc}{dt} &= \frac{k_{10} cb^4 (d - c)}{b^4 + k_{11}^4} + k_{12} b + k_{13} a - \frac{k_{14} c}{c + k_{15}} - \frac{k_{16} c}{c + k_{17}} \\ \frac{dd}{dt} &= \frac{k_{10} cb^4 (d - c)}{b^4 + k_{11}^4} + \frac{k_{16} c}{c + k_{17}} \end{aligned}$$



European Society
for Mathematical
and Theoretical
Biology

2010

Mission

The European Society for Mathematical and Theoretical Biology (ESMTB) is a non-profit scientific organization (founded in 1991) with a rapidly increasing international membership. The goal of the society is to promote theoretical approaches and mathematical tools within biology and medicine in a European and wider context. This is pursued by:

- The triannual international "European Conference on Mathematical and Theoretical Biology"
- An up-to-date website (www.esmtb.org)
- A high-rank official society journal (Journal of Mathematical Biology)
- A concise ESMTB infoletter (monthly)
- A discussion forum (European Communications)
- The support of schools and conferences
- Travel awards for ESMTB members attending theoretical/mathematical biology conferences/workshops/schools
- The competitive Reinhart Heinrich Doctoral Thesis Award (annually)

Information

Journal of Mathematical Biology

- Official society journal since 2002
- ESMTB membership includes electronic subscription to the journal

European Communications

- Keep members up-to-date on society activities
- Announce book reviews, conference reports, contributions to the history of theoretical biology, etc.

Reinhart Heinrich Doctoral Thesis Award

- Honours the best doctoral thesis in mathematical and theoretical biology
- Annual and worldwide competition

Becoming a Member

Application through:

www.esmtb.org

Board

President

Carlos A. Braumann (Portugal)

Vice President

Andrea Pugliese (Italy)

Secretary

Eva Kisdi (Finland)

Treasurer

Andreas Deutsch (Germany)

Miguel Herrero (Spain)

Christine Jacob (France)

Peter Jagers (Sweden)

Daphne Manoussaki (Greece)

Jean-Christophe Poggiale (France)

Hans Westerhoff (The Netherlands)

**8th European Conference
on Mathematical and
Theoretical Biology**

Krakow, Poland

June 28 - July 2, 2011

www.impan.pl/~ecmtb11/